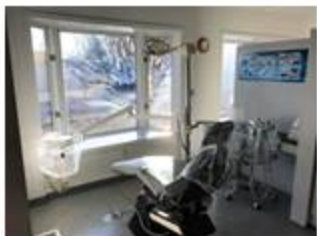




For Lease

DENTAL/MEDICAL OFFICE



1446 E Powell, Gresham, OR 97080

- 3778 Total Square Feet on Two Floors
- Well Maintained Attractive Building
- Accessible Entrance from Parking Lot
- Two HVAC Units
- Corner Lot on High Visibility East-West Traffic Corridor
- On-Site Parking 9 Designated, 1 ADA
- On Street Parking on Vista and Powell
- Sign Monument of E Powell
- \$4200.00 per Month Plus NNN

Contact: **Martin Stone, CCIM; Sue O'Halloran, Principal Broker**

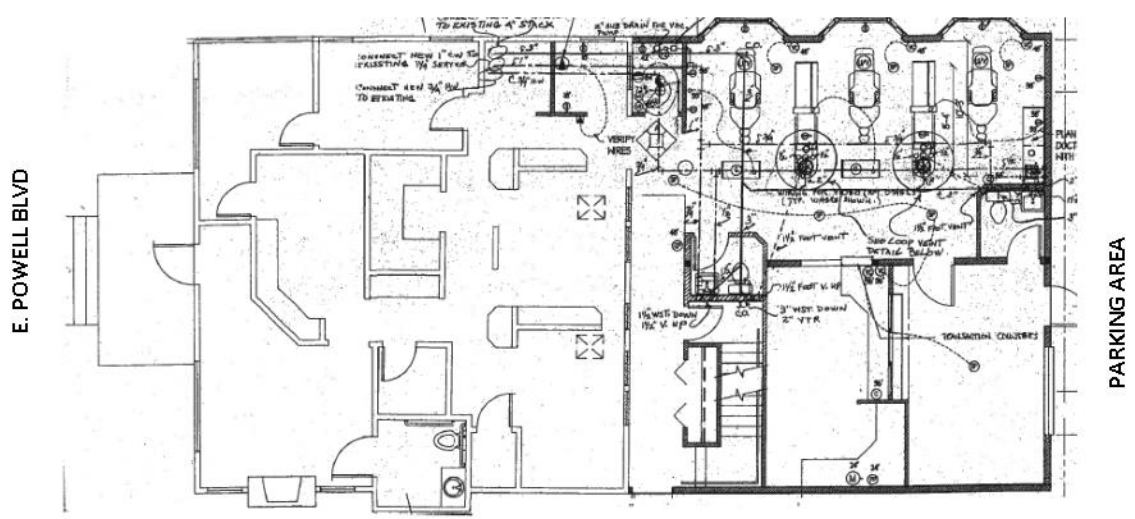
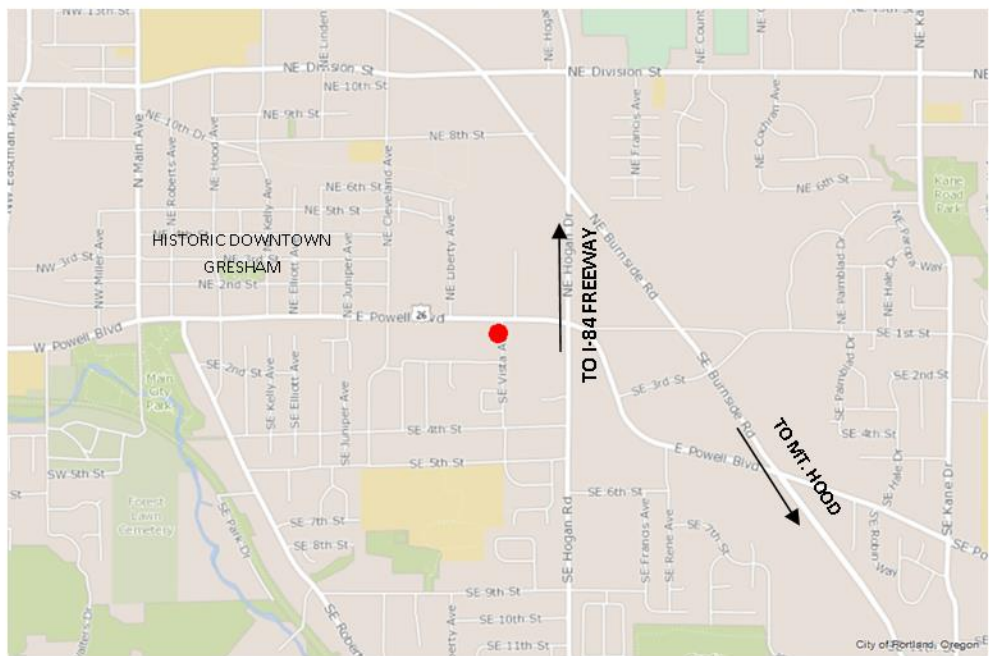
(503) 661-8000

Fax (503) 661-7400

www.KMOrealestate.com

Email: Martin@kmorealestate.com ; Sue@kmorealestate.com

KMO
KOHLMYERS O'HALLORAN, INC.



E. POWELL BLVD

PARKING AREA